



# Science Investigation Planning Sheet

What is the question we are going to investigate?

---

---

---

---

How will we carry out our investigation?

---

---

---

---

In order to make it a fair test...



what will we keep the same?

---

---

---

---

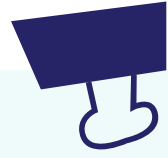
What will we change?

---

---

---

---



What will we observe?

---

---

---

---

What will we measure and how?

---

---

---

---

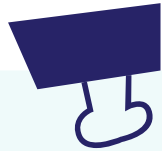
What are our predictions for the investigation?

---

---

---

---



What equipment will we need?

---

---

---

---

---

---

---

---

What are our results?

---

---

---

---





# Imscrudú Eolaíochta

Aidhm an Imscrudú (Céard atá mé ag iarraidh a fhiosrú?)

---

---

---

---

Modh (An bealach a dhéanfaidh mé an t-imscrudú)

---

---

---

---

## Triail Chothrom



Na hathróa a choinneoidh mé mar an gcéanna

---

---

---

---

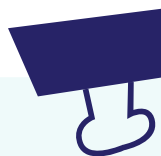
An athróg a athróidh mé

---

---

---

---



Cad a bhreathnóidh mé?

---

---

---

---

Cad a thomhaisfidh mé agus conas a dhéanfaidh mé é?

---

---

---

---

## Hipitéis (Tuar)

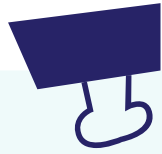
---

---

---

---

---



## Trealamh

---

---

---

---

---

---

---

---

---

---

## Mo Thorthaí

---

---

---

---

---

